

SINGLE WINDOW SIGHT GLASS SW12

DESCRIPTION

For monitoring the right operation of a steam trap to avoid leakage of live steam and consequently big energy losses, a sight glass is recommended to be installed downstream of the steam trap.

Single window SW sight glass, has been designed for this particular application.

Connections are female screwed.

USE: Condensate pipes downstream steam traps.

AVAILABLE MODELS: SW 12 - 5 mm thick glass

SIZES: DN 1/2", 3/4" and DN 1"

CONNECTIONS: Female screwed ISO 7/1Rp(BS21).

INSTALLATION: Horizontal or vertical installation.
See IMI, installation and maintenance instructions.

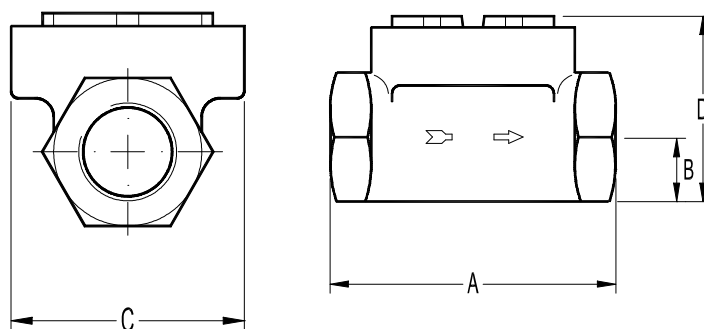


PMO – Max. operating pressure 12 bar

TMO – Max. operating temperature 150 °C

How to order: i.e. SW12 DN 1/2" BSP.

DIMENSIONS (mm)					
SIZE DN	A	B	C	D	WGT. Kgs
1/2"	80	16	62	52	0,6
3/4"	88	19	62	57	0,9
1"	88	23	62	60	0,85



MATERIALS		
POS.Nr.	DESIGNATION	MATERIAL
1	Body	Brass EN12165 / CuZn39Pb2
2	Glass nut	Brass EN12165 / CuZn39Pb2
3	* Gasket	St.Steel / Graphite
4	* Window glass	Borosilicate

*Available spare parts.

