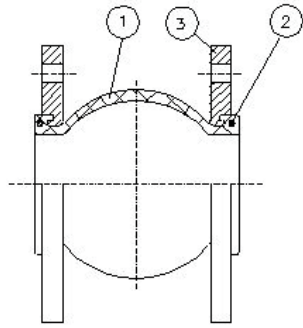


OG100



Dimensions [mm]

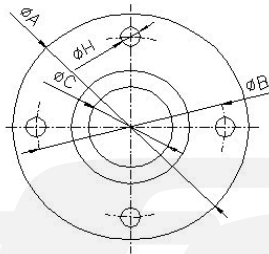
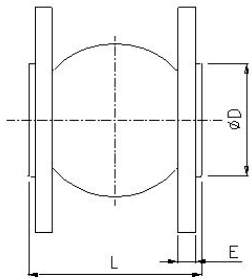
| DN  | PN | ØA  | ØB  | ØC  | ØD  | nxØH  | E  | Weight (kg) |
|-----|----|-----|-----|-----|-----|-------|----|-------------|
| 32  | 10 | 140 | 100 | 40  | 69  | 4x18  | 16 | 2,86        |
| 40  | 10 | 150 | 110 | 40  | 69  | 4x18  | 16 | 3,24        |
| 50  | 10 | 165 | 125 | 52  | 86  | 4x18  | 18 | 4,10        |
| 65  | 10 | 185 | 145 | 68  | 106 | 4x18  | 18 | 4,87        |
| 80  | 10 | 200 | 160 | 76  | 116 | 4x18  | 20 | 6,20        |
| 100 | 10 | 220 | 180 | 103 | 150 | 8x18  | 20 | 6,80        |
| 125 | 10 | 250 | 210 | 128 | 180 | 8x18  | 22 | 9,50        |
| 150 | 10 | 285 | 240 | 152 | 209 | 8x23  | 22 | 12,40       |
| 200 | 10 | 340 | 295 | 194 | 260 | 8x23  | 24 | 16,86       |
| 250 | 10 | 395 | 350 | 250 | 320 | 12x23 | 26 | 21,20       |
| 300 | 10 | 445 | 400 | 300 | 367 | 12x23 | 26 | 28,10       |
| 350 | 10 | 505 | 460 | 320 | 408 | 16x23 | 28 | 36,70       |
| 400 | 10 | 565 | 515 | 372 | 472 | 16x28 | 32 | 44,40       |
| 450 | 10 | 615 | 565 | 415 | 522 | 20x28 | 36 | 46,80       |
| 500 | 10 | 670 | 620 | 454 | 570 | 20x28 | 38 | 59,00       |

- D**
- Balg: EPDM
  - Flansche: Carbonstahl
  - Flanschanschluss gemäß DIN2501
  - Max. Betriebsdruck: 10 bar
  - Temperaturgrenzen (min./max.): -10°C ... +105°C

- E**
- Bellow: EPDM
  - Flanges: carbon steel
  - Flanges according to DIN2501
  - Max. working pressure: 10 bar
  - Working temp. (min./max.): -10°C ... +105°C

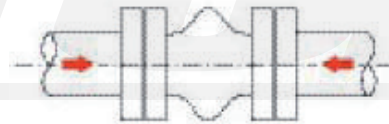


OG100



Materials

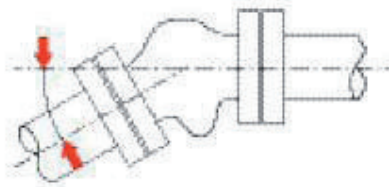
| Nr. | Bauteil / Part | Material                 | Oberflächenbehandlung/Surface Treatment |
|-----|----------------|--------------------------|---|
| 1   | Balg/Bellow    | EPDM                     |   |
| 2   | Ring/Ring      | Carbonstahl/Carbon steel | verzinkt / Zinc plated                  |
| 3   | Flansch/Flange | Carbonstahl/Carbon steel | verzinkt / Zinc plated                  |



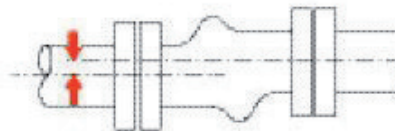
Axial Compression



Axial Elongation



Angular Deflection



Lateral Displacement

Dimensions [mm]

| DN  | INCH   | L   | Axiale Bewegung |      | Laterale Bewegung | Angolare Bewegung |
|-----|--------|-----|-----------------|------|-------------------|-------------------|
|     |        |     | Komp.           | Exp. |                   |                   |
| 32  | 1 1/4" | 95  | 20              | 12   | ±14               | ±15°              |
| 40  | 1 1/2" | 95  | 20              | 12   | ±14               | ±15°              |
| 50  | 2"     | 105 | 20              | 12   | ±14               | ±15°              |
| 65  | 2 1/2" | 115 | 20              | 12   | ±14               | ±15°              |
| 80  | 3"     | 130 | 20              | 12   | ±14               | ±15°              |
| 100 | 4"     | 135 | 20              | 12   | ±14               | ±15°              |
| 125 | 5"     | 170 | 20              | 12   | ±14               | ±15°              |
| 150 | 6"     | 180 | 20              | 12   | ±14               | ±15°              |
| 200 | 8"     | 195 | 20              | 12   | ±14               | ±15°              |
| 250 | 10"    | 240 | 20              | 12   | ±14               | ±15°              |
| 300 | 12"    | 260 | 25              | 16   | ±22               | ±15°              |
| 350 | 14"    | 265 | 25              | 16   | ±22               | ±15°              |
| 400 | 16"    | 265 | 25              | 16   | ±22               | ±15°              |
| 450 | 18"    | 265 | 25              | 16   | ±22               | ±15°              |
| 500 | 20"    | 265 | 25              | 16   | ±22               | ±15°              |

OG100